

MRI – suitable

Since SchurSign® does not contain metal, it is well suited for and easily identified on MRI.

Ergonomically designed applicator

SchurSign® comes with an ergonomically designed applicator. It is supplied as a sterile packaged and pre-loaded disposable product. The applicator features a 14 gauge, 12 cm stainless steel needle with centimeter markings. The needle tip has a special cut to minimize tissue trauma.



Applicator of SchurSign®

THAT'S WHY WOMEN AND THEIR DOCTORS NEED SCHURSIGN®

For more information
please contact:

SurgMark GmbH

Mobil +1 226 9988 874

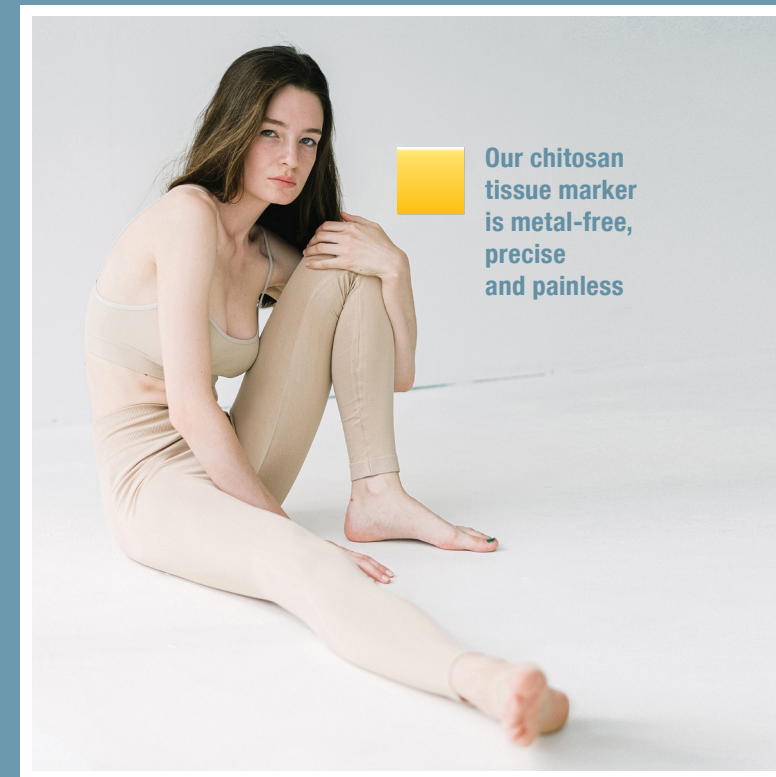
Mail info@surgmark.com

Web www.surgmark.com

SurgMark ■

THE BIOMATERIAL, PAIN FREE, AND PRECISE TISSUE MARKER

Our chitosan
tissue marker
is metal-free,
precise
and painless



A new era of tissue marking is leading

Ultrasound visible, metal-free marking – an unmet need in breast cancer

Now available to women in the USA

SchurSign® is a new breast biopsy marker developed by SurgMark GmbH. It is made of the biocompatible material chitosan and has been specially developed for use under ultrasonic guidance.

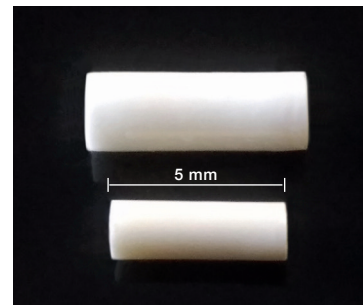
SchurSign® has been approved by the FDA and is now available to patients in the U.S. in 2024.

SchurSign® - Benefits for Doctors and Patients

- Easy implantation, immediate and long-term ultrasound visibility.
- Excellent visibility in all imaging technologies including MRI.
- Quickly becomes flexible with hydration, therefore painless when touched or when breast is compressed.
- Reduces the need for re-excision of the marker.

SchurSign® is made from the biomaterial chitosan

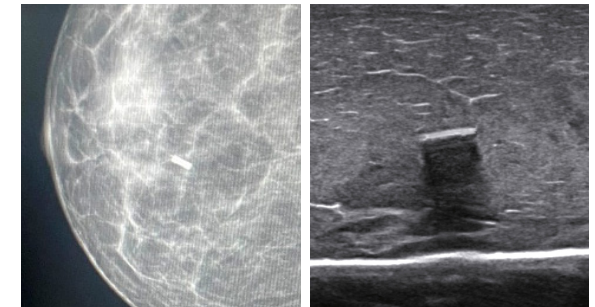
- Chitosan is a highly biocompatible biomaterial derived from chitin.
- Chitosan is a polysaccharide and acts as a hydrogel.
- FDA-approved medical uses for chitosan include: Wound dressings and haemostatics, and implants for nerve regeneration.



SchurSign® before (bottom), after (top) hydration

Immediate visibility in ultrasound

- SchurSign® is specifically designed for ultrasound guided placement.
- The marker is immediately and easily recognizable by a characteristic echo.



Appearance of SchurSign® in mammography

Appearance of SchurSign® in ultrasound

Precision and long-term visibility

- SchurSign® is designed for long-term ultrasound visibility.
- It does not migrate during or after implantation.
- SchurSign® is easy to identify in mammography, CT and MRI.